



KOBELCO RK-250 (25 t)

BOOM LIFTING CAPACITIES

RK250

Main Boom Lifting Capacities with Outriggers

Unit: metric ton

MAIN Operating radius (m)	With outriggers in 6.3m position 360° swing area				With outriggers in 5.9m position Over the side				With outriggers in 5.1m position Over the side				With outriggers in 3.8m position Over the side				With outriggers in 2.105m position Over the side				
	Boom length in meters				Boom length in meters				Boom length in meters				Boom length in meters				Boom length in meters				
	9.32	16.42	23.52	30.62	9.32	16.42	23.52	30.62	9.32	16.42	23.52	30.62	9.32	16.42	23.52	30.62	9.32	16.42	23.52	30.62	
2.5	25.00	19.00			25.00	19.00			25.00	19.00			25.00	19.00			11.10	10.00			
3.0	25.00	19.00			25.00	19.00			25.00	19.00			25.00	19.00			11.10	10.00			
3.5	25.00	19.00	12.50		25.00	19.00	12.50		25.00	19.00	12.50		20.00	19.00	12.50		8.40	8.00	9.30		
4.0	23.00	19.00	12.50		23.00	19.00	12.50		23.00	19.00	12.50		15.70	15.60	12.50		6.70	6.30	7.20		
4.5	21.20	18.00	12.50		21.20	18.00	12.50		21.20	18.00	12.50		12.60	12.60	12.50		5.50	5.10	5.90		
5.0	19.40	16.70	12.50	7.00	19.40	16.70	12.50	7.00	18.10	16.70	12.50	7.00	10.60	10.30	10.50	7.00	4.55	4.20	4.90	5.30	
5.5	17.80	15.60	11.85	7.00	17.80	15.60	11.85	7.00	15.35	15.60	11.85	7.00	9.05	8.70	9.00	7.00	3.85	3.50	4.15	4.50	
6.0	16.30	14.60	11.20	7.00	16.30	14.60	11.20	7.00	12.90	12.80	11.20	7.00	7.70	7.50	7.80	7.00	3.30	2.95	3.55	3.90	
6.5	15.10	13.80	10.60	7.00	15.10	13.80	10.60	7.00	11.10	10.80	10.60	7.00	6.60	6.50	6.85	7.00	2.85	2.45	3.05	3.35	
6.8	8.60	13.30	10.30	7.00	8.60	13.30	10.30	7.00	8.60	9.90	10.30	7.00	6.00	5.90	6.40	6.65	2.60	2.20	2.75	3.05	
7.0		13.00	10.10	7.00		12.65	10.10	7.00		9.40	10.10	7.00		5.60	6.10	6.40		2.05	2.60	2.85	
7.5		12.20	9.60	7.00		10.95	9.60	7.00		8.20	9.00	7.00		4.90	5.50	5.75		1.70	2.20	2.45	
8.0		10.90	9.10	7.00		9.65	9.10	7.00		7.30	8.05	7.00		4.40	4.90	5.15		1.40	1.90	2.10	
9.0		8.65	8.20	6.40		7.60	8.20	6.40		5.85	6.45	6.40		3.50	3.95	4.20		0.90	1.40	1.60	
10.0		7.05	7.40	5.90		6.20	6.90	5.90		4.75	5.35	5.75		2.80	3.25	3.50			1.05	1.25	
11.0		5.85	6.50	5.35		5.10	5.80	5.35		3.90	4.50	4.75		2.25	2.70	2.95				0.95	
12.0		4.95	5.45	4.90		4.30	4.95	4.90		3.30	3.80	4.10		1.80	2.25	2.50					
13.0		4.20	4.70	4.50		3.70	4.25	4.50		2.75	3.25	3.50		1.40	1.90	2.15					
13.5		3.90	4.40	4.30		3.40	4.00	4.25		2.50	3.00	3.25		1.20	1.75	2.00					
13.9		3.70	4.15	4.20		3.25	3.80	4.00		2.30	2.85	3.10		1.00	1.65	1.90					
14.0			4.10	4.15			3.75	3.95			2.80	3.05			1.60	1.85					
15.0			3.60	3.85			3.25	3.40			2.45	2.65			1.35	1.55					
16.0			3.15	3.45			2.80	3.00			2.10	2.35			1.10	1.35					
17.0			2.80	3.05			2.45	2.65			1.80	2.05			0.95	1.15					
18.0			2.45	2.70			2.15	2.35			1.55	1.80			0.75	1.00					
19.0			2.15	2.45			1.90	2.10			1.35	1.55			0.60	0.85					
20.0			1.90	2.20			1.65	1.90			1.15	1.40				0.70					
21.0			1.70	1.95			1.50	1.70				1.20									
22.0				1.75				1.50				1.05									
24.0				1.40				1.15				0.75									
26.0				1.15				0.90				0.50									
28.0				0.95				0.65													
28.1				0.95				0.65													
Min. boom angle	0°	0°	0°	0°	0°	0°	0°	0°	0°	0°	0°	15°	23°	0°	0°	26°	44°	0°	48°	60°	66°

Jib Lifting Capacities with Outriggers

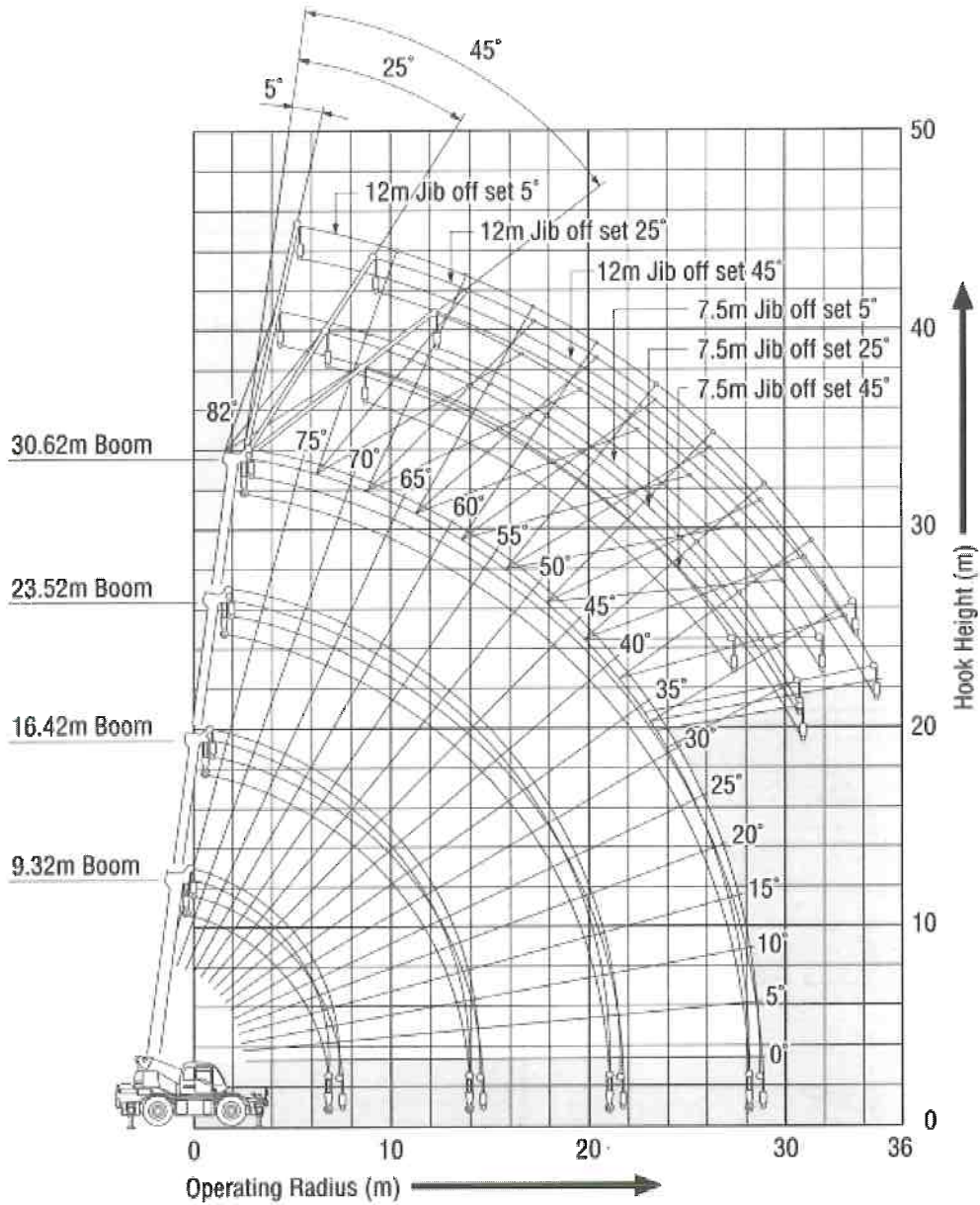
Unit: metric ton

6.3 M	With outriggers in 6.3m position (360° swing area)					
	Boom angle	7.5 m Jib			12.0 m Jib	
		Jib angle:5°	Jib angle:25°	Jib angle:45°	Jib angle:5°	Jib angle:25°
82°	3.00	2.10	1.44	2.00	1.25	1.00
80°	3.00	2.10	1.44	2.00	1.25	1.00
75°	3.00	2.10	1.35	2.00	1.18	1.00
73.5°	3.00	2.10	1.33	1.87	1.15	1.00
71°	3.00	2.10	1.30	1.70	1.10	0.95
69°	2.82	2.10	1.27	1.58	1.06	0.91
65°	2.50	1.88	1.23	1.40	1.01	0.84
60°	2.10	1.65	1.20	1.20	0.94	0.74
55°	1.51	1.28	1.18	1.10	0.88	0.64
52°	1.22	1.08	0.99	0.92	0.84	0.59
50°	1.05	0.95	0.88	0.81	0.74	0.54
48°	0.91	0.84	0.79	0.72	0.65	0.51
45°	0.74	0.70	0.70	0.59	0.53	0.45
40°	0.50	0.44		0.44	0.38	
37°	0.39	0.32		0.36	0.30	
36°	0.35	0.30		0.33	0.27	
35°	0.32	0.28		0.31		
34°	0.30	0.26				
32°	0.26					
Min. boom angle	32°	34°	45°	35°	36°	45°

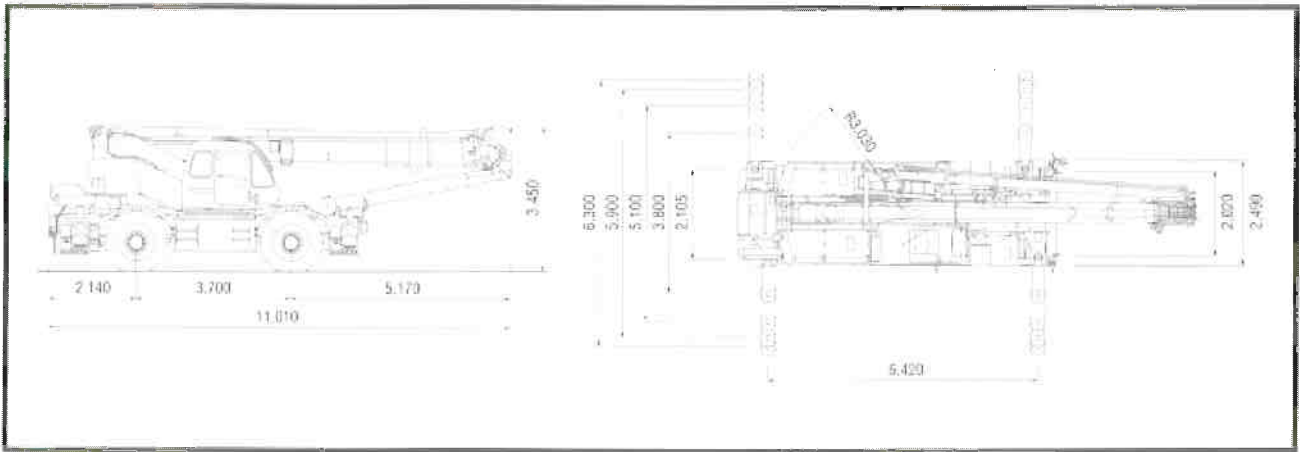
5.9 M	With outriggers in 5.9m position (Over the side)					
	Boom angle	7.5 m Jib			12.0 m Jib	
		Jib angle:5°	Jib angle:25°	Jib angle:45°	Jib angle:5°	Jib angle:25°
82°	3.00	2.10	1.44	2.00	1.25	1.00
80°	3.00	2.10	1.44	2.00	1.25	1.00
75°	3.00	2.10	1.35	2.00	1.18	1.00
73.5°	3.00	2.10	1.33	1.87	1.15	1.00
71°	3.00	2.10	1.30	1.70	1.10	0.95
70°	2.90	2.10	1.28	1.64	1.08	0.93
69°	2.82	2.10	1.27	1.58	1.06	0.91
65°	2.50	1.88	1.23	1.40	1.01	0.84
60°	1.85	1.49	1.20	1.20	0.94	0.74
55°	1.19	1.05	0.92	0.96	0.86	0.64
52°	0.89	0.82	0.76	0.76	0.67	0.59
50°	0.74	0.69	0.65	0.61	0.55	0.52
49°	0.68	0.63	0.59	0.54	0.50	0.47
48°	0.61	0.56	0.53	0.47	0.44	0.43
45°	0.46	0.40	0.37	0.30	0.29	0.28
42°	0.32	0.27				
40°	0.26					
Min. boom angle	40°	42°	45°	45°	45°	45°



Working Ranges

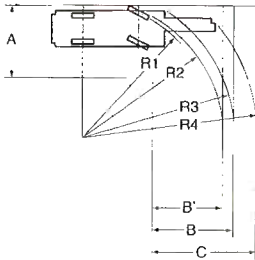


*Boom/jib bending with load is not involved in figure of working ranges.



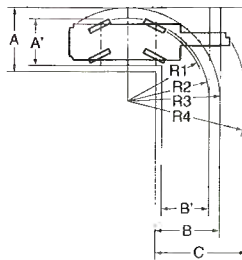
TURNING RADIUS

2-Drive Steering (Front)



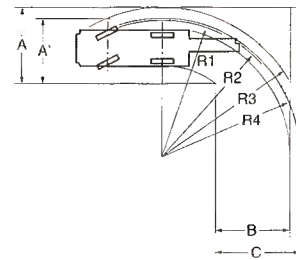
R1	Minimum turning radius	9.30m
R2	Tire clearance with cab	9.51m
R3	Carrier clearance	10.30m
R4	Boom clearance	11.86m
A	Entrance width (carrier)	4.81m
B	Exit width (carrier)	5.56m
B'	Exit width (tires)	4.80m
C	Exit width (boom)	7.17m

4-Drive Steering



R1	Minimum turning radius	5.20m
R2	Tire clearance with cab	5.45m
R3	Carrier clearance	6.25m
R4	Boom clearance	8.19m
A	Entrance width (carrier)	4.39m
A'	Entrance width (tires)	3.25m
B	Exit width (carrier)	4.39m
B'	Exit width (tires)	3.25m
C	Exit width (boom)	6.39m

2-Drive Steering (Rear)



R1	Minimum turning radius	9.30m
R2	Tire clearance with cab	9.51m
R3	Carrier clearance	10.30m
R4	Boom clearance	9.44m
A	Entrance width (carrier)	5.25m
A'	Entrance width (tires)	4.80m
B	Exit width (tires)	5.25m
C	Exit width (boom)	5.78m

STANDARD EQUIPMENT

Engine tachometer
Tachograph
Hourmeter
Engine over running alarm
Paper-element air cleaner
Three working lights
Horn
Towing hooks (one front, one rear)
Outrigger plates
Oil cooler
Cab heater/defroster
Air conditioner
Operation Manual: one set

OTHER AMENITIES

Radio
Cigarette lighter
Ashtray
Sun visor
Floor mat
Windshield wiper/washer

OPTIONAL EQUIPMENT

Extra hydraulic oil cooler for hydraulic system
